

QUESTIONS TO CONSIDER

Choosing a CLO Trustee

Choosing a CLO trustee is a critical decision for asset managers seeking to ensure the success and integrity of their collateralized loan obligations. With complex structures and numerous compliance requirements, you need a trustee that offers unwavering support throughout the lifecycle of your CLO while maintaining transparency for your stakeholders.

The next time you begin negotiations on a CLO, consider these questions when choosing a CLO trustee.



1

Proven CLO Expertise

Does the trustee or collateral administrator have a deep bench of expertise?

At Computershare Corporate Trust...

Our 25+ year track record includes collaborative ventures on 250+ CLOs¹ with 35+ managers¹, giving us the expertise to tailor workflows to the clients we serve. We adapt to your evolving needs, enabling you to meet your financial objectives.



It's important to evaluate providers for staffing ratios, team tenure, and ability to retain, recruit, and train staff.

2

Breadth Across Structured Finance

Is the provider cross-trained in a broad suite of structured finance products?

At Computershare Corporate Trust...

Our teams can deliver under pressure in part because we have expertise and can operate across the structured finance spectrum. That breadth sharpens our handling of data, controls, and edge cases on every deal we service.



Ask if the provider can show how experience in other structured products has helped them anticipate issues or prevent breaks in CLO administration.

3

Speed and Accuracy Through Automation

Does the provider deliver speed and accuracy through automation?

At Computershare Corporate Trust...

Our internal processes support concentration and covenant testing for both CLOs and ABL facilities. We layer in reconciliations, workflow, exception routing, evidence capture, and SLA monitoring to reduce breaks and shorten cycle time. For ABL facilities, we also support automated borrowing base calculations and waterfall reporting where applicable.



Today's CLOs and credit facilities require accurate, ongoing oversight of collateral, portfolio information, and cash. Behind the scenes, this demands automation, not spreadsheets.

Providers should show calculation transparency for tests and borrowing bases, including overrides, version history, exception routing, evidence capture, and SLA tracking.

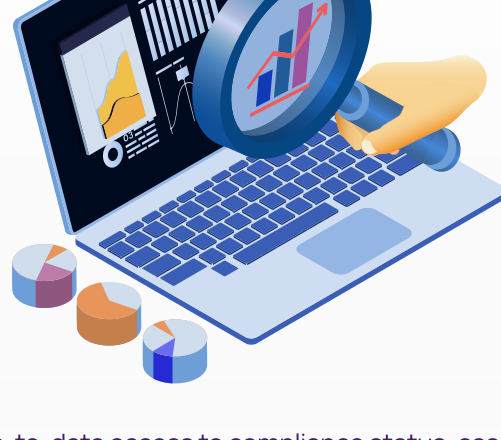
4

Data Insights On Demand

Does the provider give you online access to data and insights with a client portal?

At Computershare Corporate Trust...

Our client portal, the TrustConnect™ CLO-ABL Direct puts key data at your fingertips. Borrowers and CLO asset managers can monitor collateral quality, track cash activity, access loan notices, review concentration limits, and run compliance tests without waiting for a file. The portal supports drill-downs, versioned calculation views, and exports via files to eliminate bottlenecks and enable faster decisions.



Up-to-date access to compliance status, cash activity, loan notices, asset-level data, and borrowing base calculations is now the baseline.

Providers should be able to produce drilldowns, export options, and show versioned calculations with override history.

5

Direct Access to Dedicated Teams

Can your trustee or collateral administrator answer your questions without delay?

At Computershare Corporate Trust...

You get dedicated teams who can promptly resolve multifaceted inquiries, while providing coverage for month-end and other peak periods, documented incident response, clear communication standards, and defined escalation paths to ensure problems are quickly resolved at the right level. Our risk and accurate responses minimize the risk of misinformation, safeguarding both your peace of mind and the interests of your investors and lenders.



When knowledge is siloed, simple issues can bounce between departments, creating delays, confusion, and the risk of inconsistent answers.

An expert provider ensures that clients have dedicated teams with a comprehensive understanding of their unique portfolio—and backs that up with clear escalation paths when issues need urgent resolution.

How well does Computershare check the boxes?

We encourage you to ask these same team questions to the Computershare Corporate Trust, or reach out to our website and contact our team online, or reach out to your local Computershare contact.

computershare.com/corporatetrust



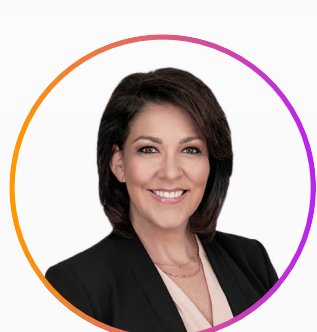
WORLD CLASS TEAM

Some of the experts you'll be working with



Michael Oliver
Senior Vice President, Business Development

"I look forward to bringing over two decades of experience to Computershare Corporate Trust and continuing to build on Computershare's success in the Broadly Syndicated and Middle Market CLO space along with growing our loan administration, loan custody, and loan agency platforms. I'm excited to work with our experienced teams in these areas to offer value-add solutions and provide high-level service to our clients."



Tara Anderson
Senior Vice President, Business Development

"In the fast-paced leveraged loan industry, our clients need a reliable partner that can easily adapt to their ever-evolving needs. Throughout my career, I've found it most rewarding to build and maintain strong and lasting relationships developed through consistent, exceptional service and backed by our knowledgeable teams. I'm proud to be part of Computershare as we help our clients meet their financial objectives."

As one of the top providers of CLO trust services¹, Computershare understands the challenges associated with administering both middle market and broadly syndicated loan portfolios.