

# BLOCKCHAIN BLOCKCHAIN BLOCKCHAIN



**Paul Conn**

President > Global Capital  
Markets

**Computershare**



**Peter Randall**

CEO  
**Setl**



**SETL**

simple | immediate | unified

 **Computershare**

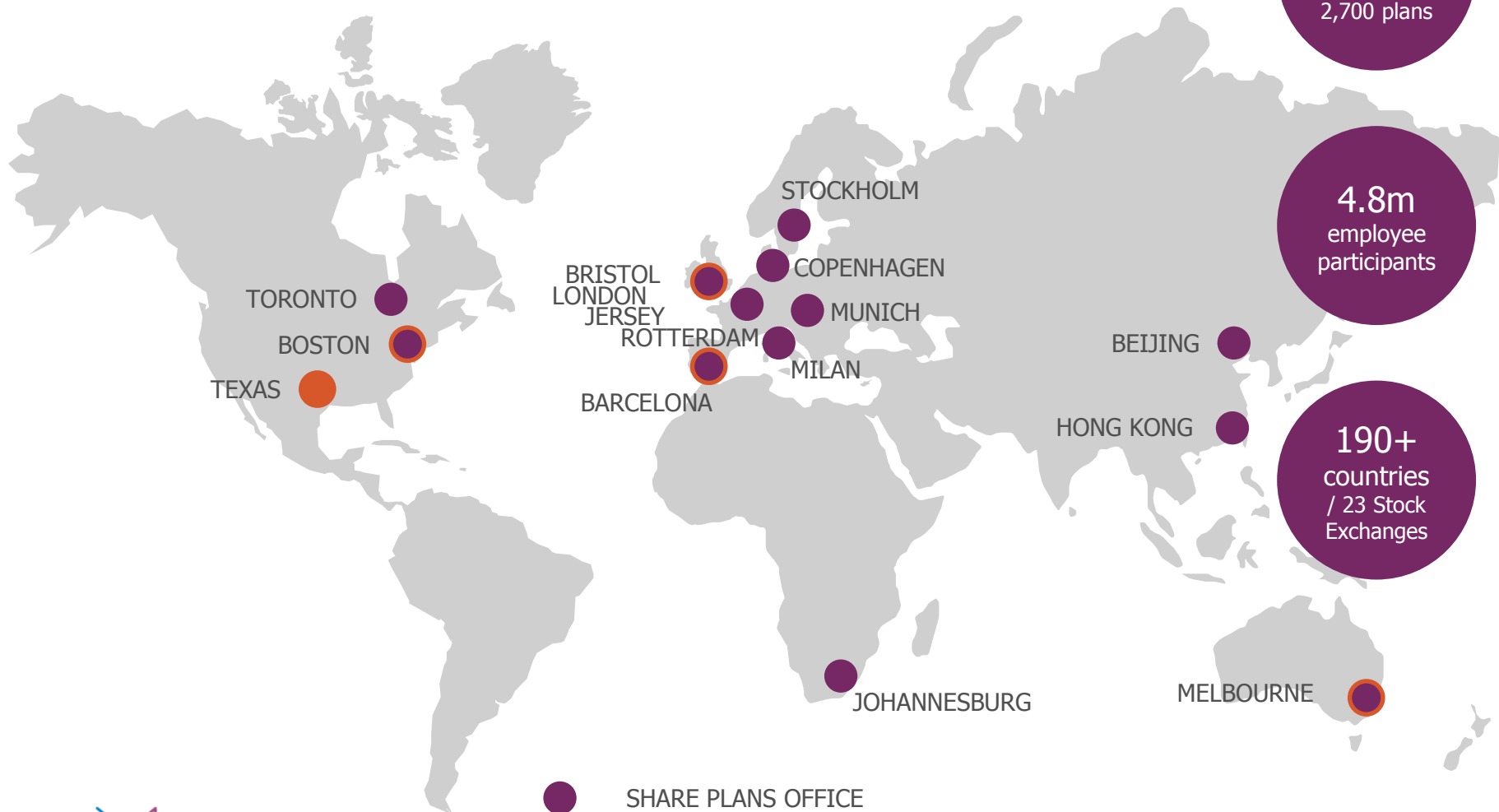


- › Specialists in complex, regulated financial services administration
  - Transfer agency/share registry
  - Equity compensation and employee share plans
  - Loan administration
  
- › Trusted by 16,000 corporate clients in 20 countries
  
- › Employing 16,000 employees in 90 global locations
  
- › Managing recordings for 125m stakeholders





The world's largest share plan provider



1,500  
clients /  
2,700 plans

4.8m  
employee  
participants

190+  
countries  
/ 23 Stock  
Exchanges



# Blockchain: Just a lot of noise?



\$20<sub>BN</sub>

Expected value of the global blockchain technology market by the end of 2024<sup>1</sup>



\$12<sub>BN</sub>

Yearly cost savings that blockchain technology could bring to banks<sup>2</sup>

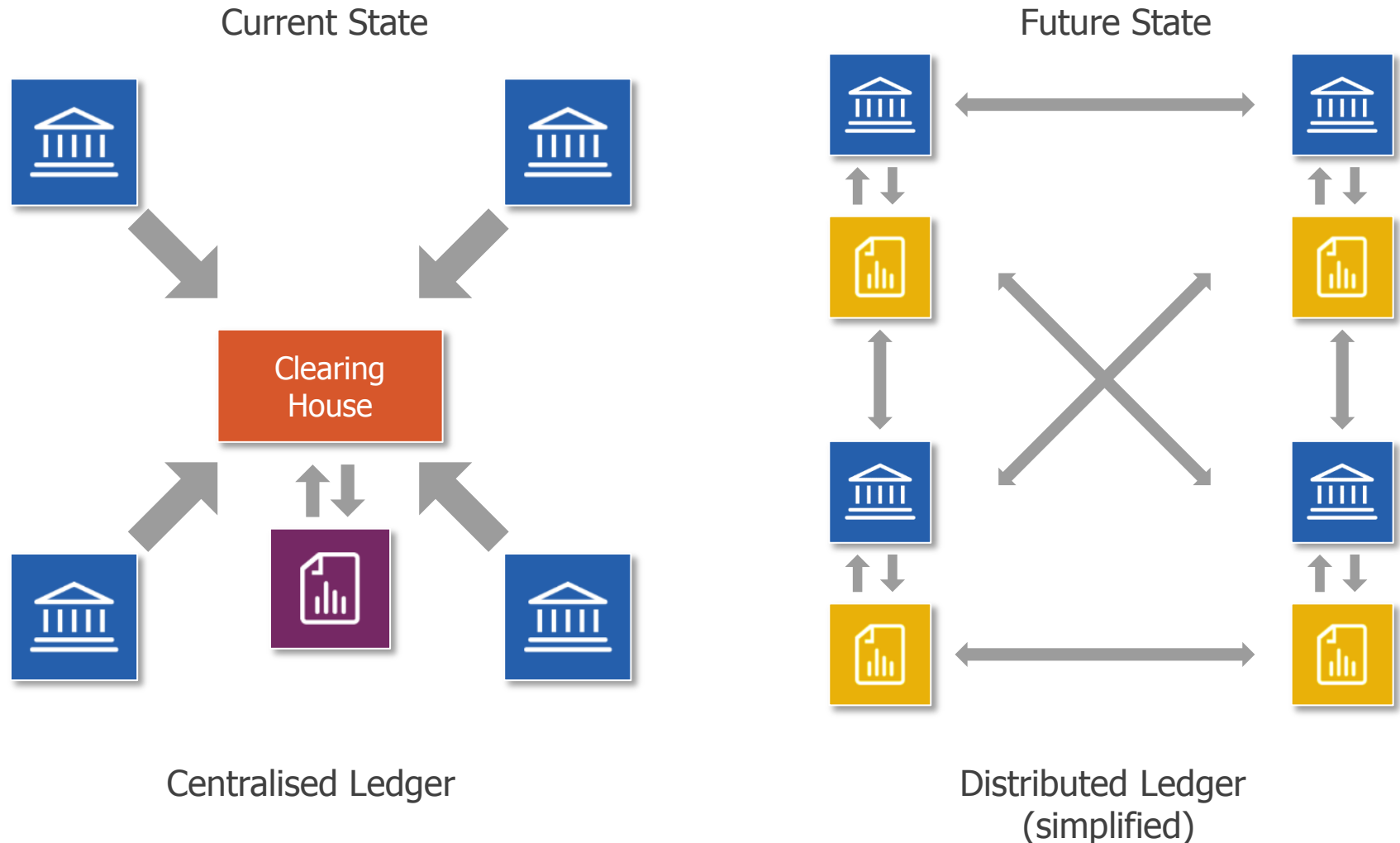


90%

of major North American and European banks are exploring blockchain<sup>3</sup>

# Market Structure: Centralised vs. Distributed Ledgers

A distributed ledger is a network that records ownership through a shared ledger, not through a centralised institution





simple | immediate | unified

- › Founded in 2015, SETL's goal is to become the market leading provider of transactional services across a range of industries leveraging distributed ledger technology



Financial services  
specialists



Advanced solution



Flexible delivery  
model



simple | immediate | unified



simple | immediate | unified

## Opportunity

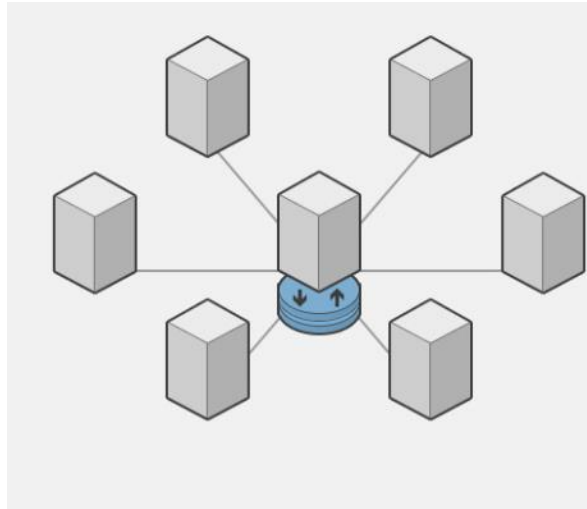
Create payment and settlement systems which are more performant, more secure and less costly than incumbent systems



80%

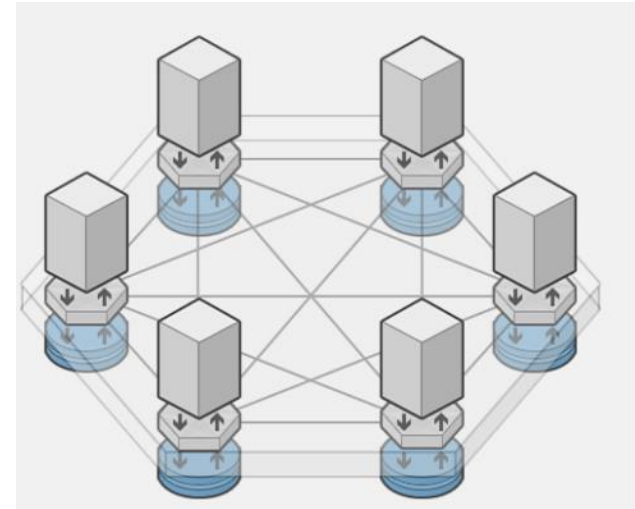
The SETL benchmark  
for cost reduction

# How is blockchain different to a traditional system?



## Traditional shared database

- › Data is maintained by a single private organisation
- › All parties rely upon one single source
- › Data integrity is opaque
- › Permissions done using outdated means

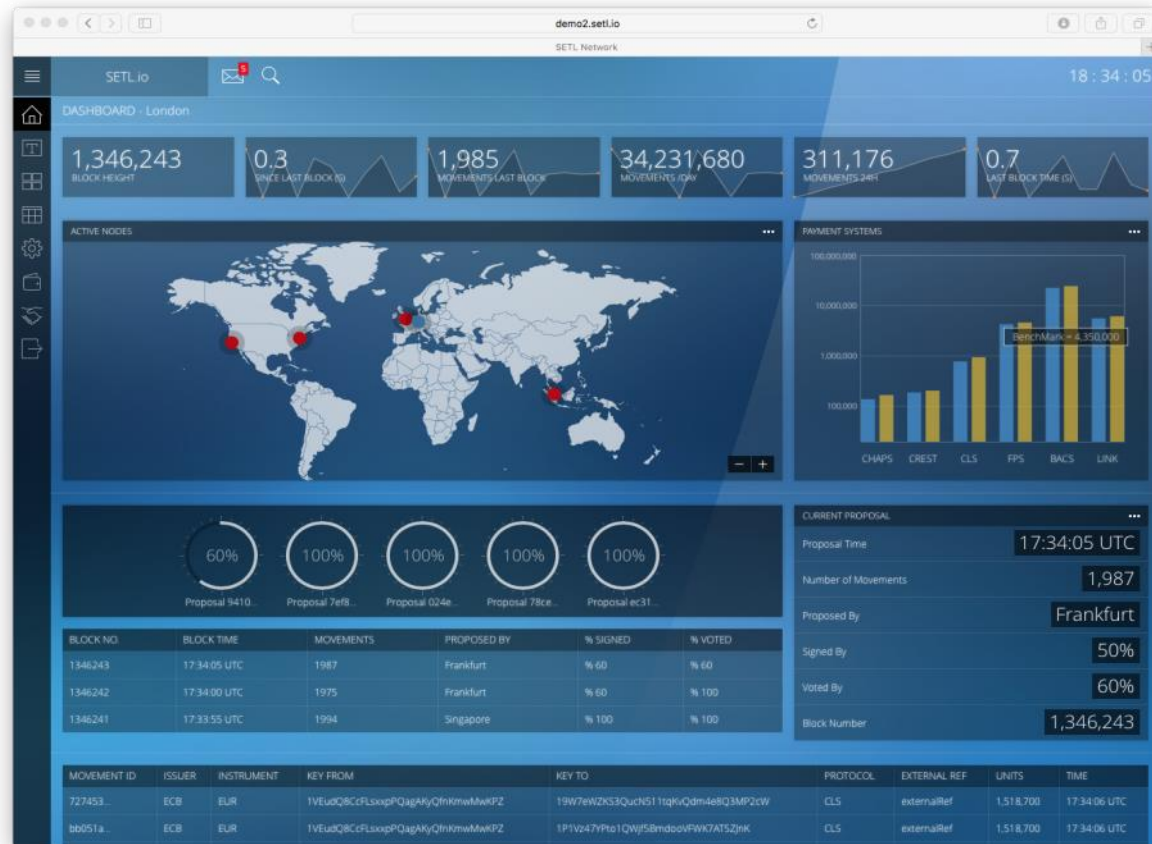


## Blockchain shared database

- › Uses cryptographic techniques to maintain data integrity, manage permissions
- › Allows for distribution of data and processing
- › Uses hashes to fingerprint and reconcile data over time and between locations



# Let's make it real....



# What does blockchain mean for share registry and employee share plans?



Any questions?



THANK YOU