

A young girl and a young boy are focused on a small electronic circuit on a table. The girl, on the left, is leaning over the table, and the boy, on the right, is also leaning over. They are both looking intently at a small light bulb that is glowing. The background shows a classroom setting with bookshelves and a window with patterned curtains.

**SIEMENS**  
*Ingenuity for life*

# Cents4Sense

Social responsibility empowered through share ownership

© Siemens 2019

[siemens.com](http://siemens.com)

”



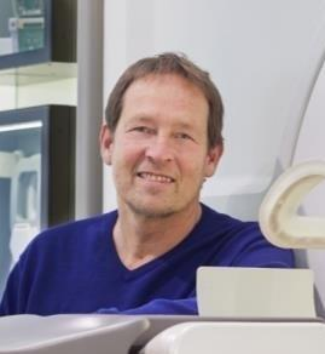
More than 170 years ago, Siemens was founded on a powerful idea: A company should not only focus on maximizing profits. It should also serve society – with technologies and products, with its employment practices, with everything that it does.

This idea is still alive today. Serving society while doing successful and sustainable business is at the heart of Siemens’s strategy. It’s our company’s ultimate purpose.”

*Joe Kaeser*







## Our purpose

We serve society.

We create value for all stakeholders.

We make real what matters.







**SIEMENS**  
*Ingenuity for life*

Leading in Electrification,  
Automatization and  
**Digitalization**

**379,000**

Employees

**€83 bn**

Revenue

**€6.1 bn**

Net profit

**11.3%**

Profit margin industrial  
business

In Fiscal 2018

# The five elements of our Ownership Culture



## Equity

Support long-term, output and profit orientation

## People orientation

- Empowerment and trust
- Honesty, openness and collaboration



## Values – Our foundation

- Responsible
- Excellent
- Innovative

## Behaviors

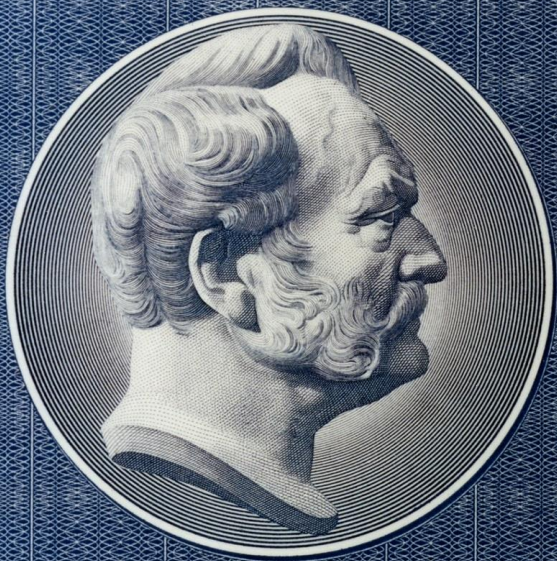
- Respect
- Focus
- Initiative and execution

## Leadership

- Be bold, decisive and courageous
- Exemplify "Siemens matters"
- Motivate and engage



SIEME



DER INHABER DIESER STAMMAK  
AN DER SIEMENS AKTIENGESELL  
NACH MASSGABE DER SATZUNG

EINE AKTIE

SIEMENS AKTIENGES

AUFSICHTSRAT

*W. Müller* *Konchba*

300,000

Siemens employees are already  
shareholders of the company

---

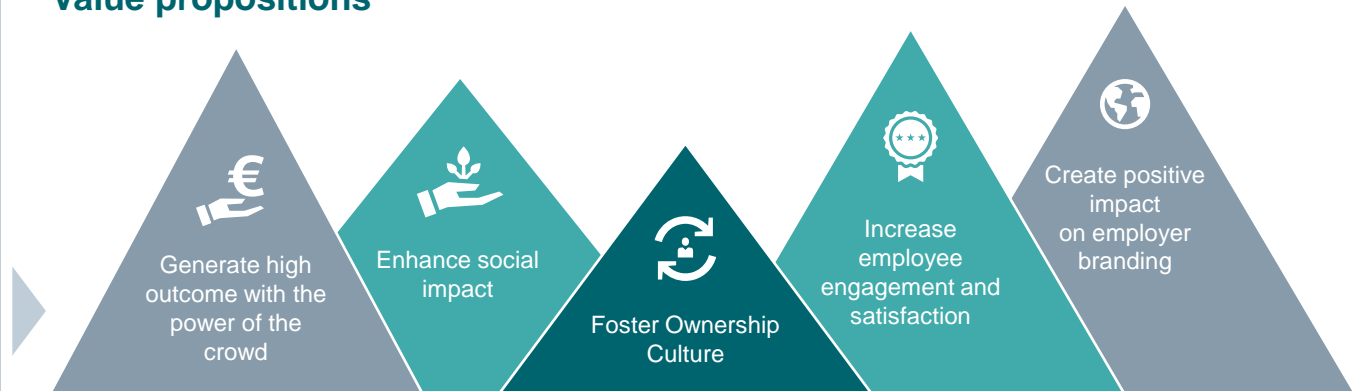
# Our vision – Foster ownership culture and drive purpose



**Contribute to bringing our purpose to life by making real what matters and creating impact one dividend at a time:**

Enabling employee shareholders to take social responsibility by voluntarily donating for social projects around the world!

## Value propositions



## Guiding principles

Easy – transparent – participative

# The selected projects cover initiatives around the world

## Selected projects

### 1 | Experimento

Real-life science and technology instruction for children  
Footprint: Regional focus on Africa, Latin America, Europe

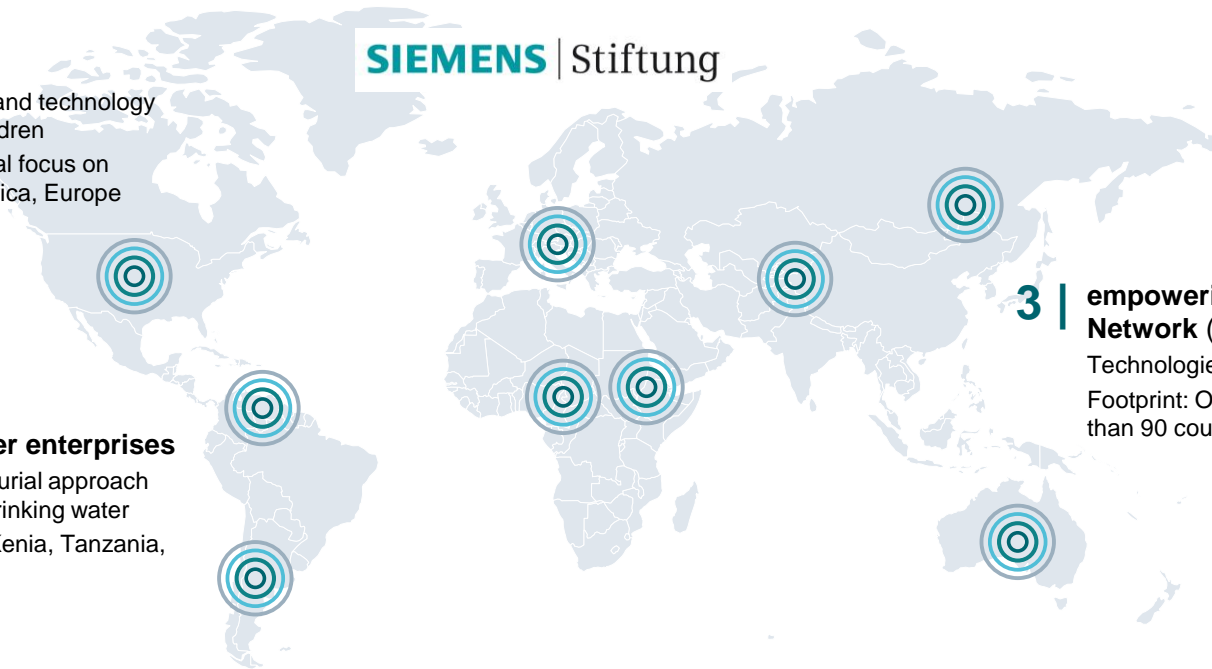
### 2 | Safe water enterprises

Entrepreneurial approach to supply drinking water  
Footprint: Kenya, Tanzania, Uganda

**SIEMENS** | Stiftung

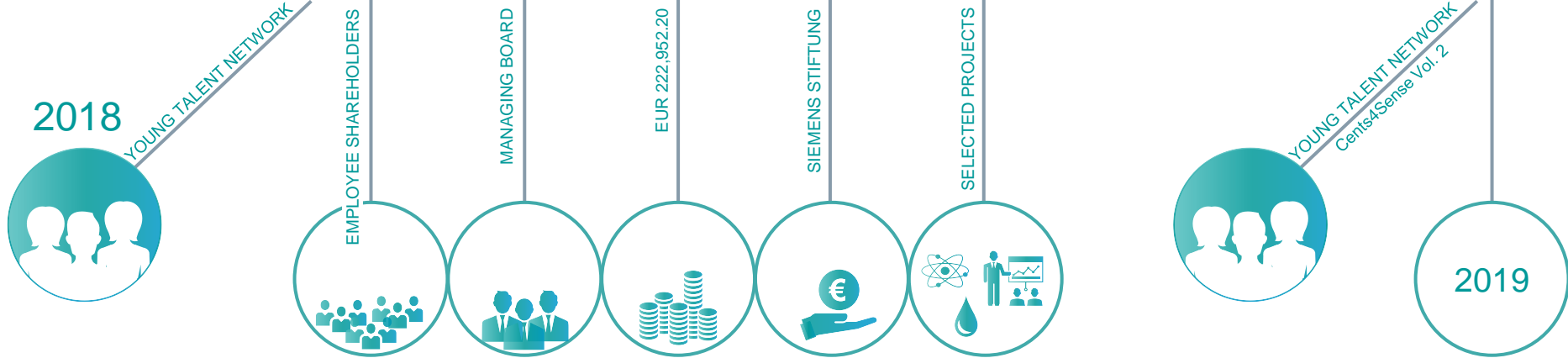
### 3 | empowering people. Network (globally)

Technologies for basic needs  
Footprint: Operating in more than 90 countries





# Cents4Sense Our journey

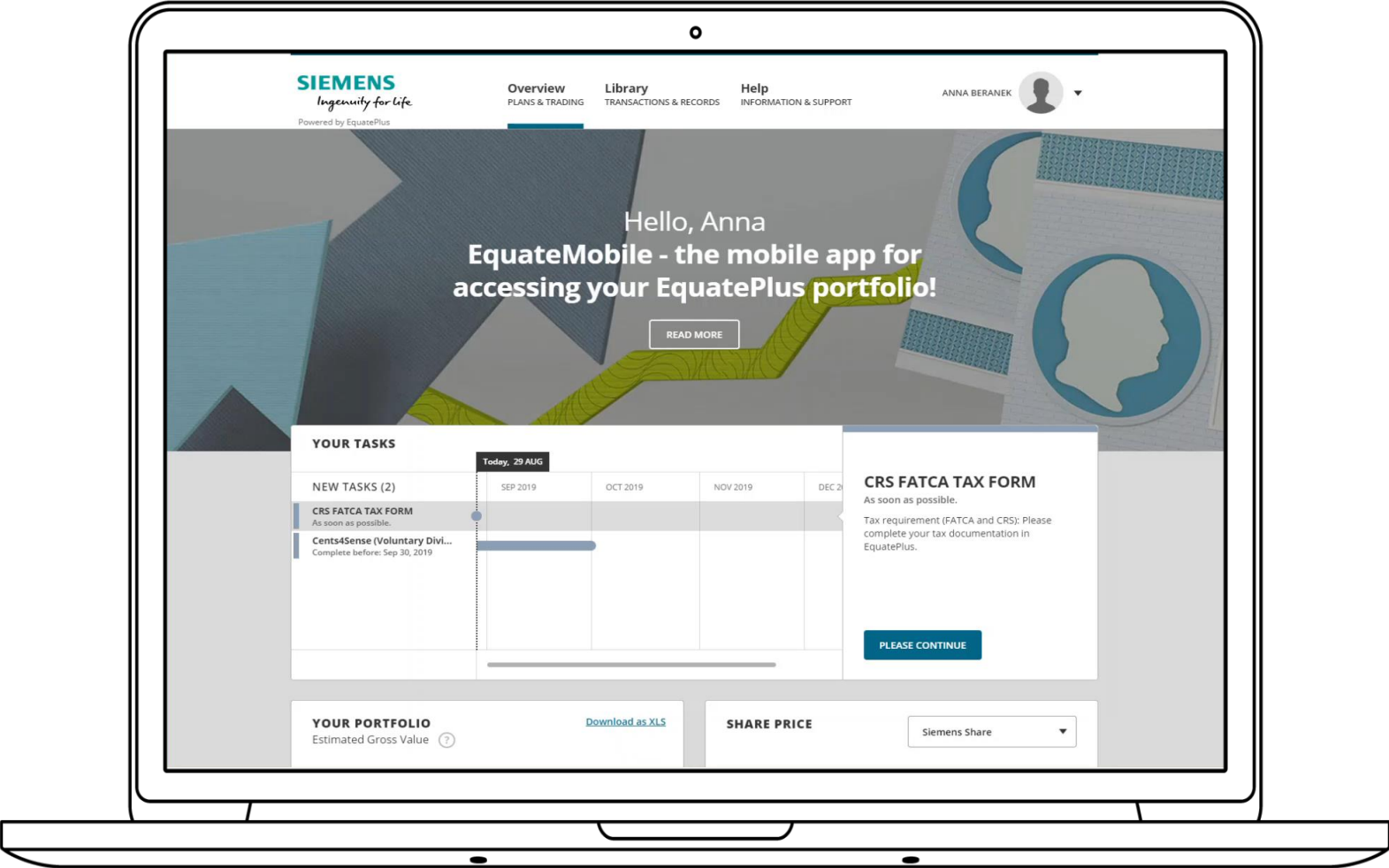


# How many share holders donated?

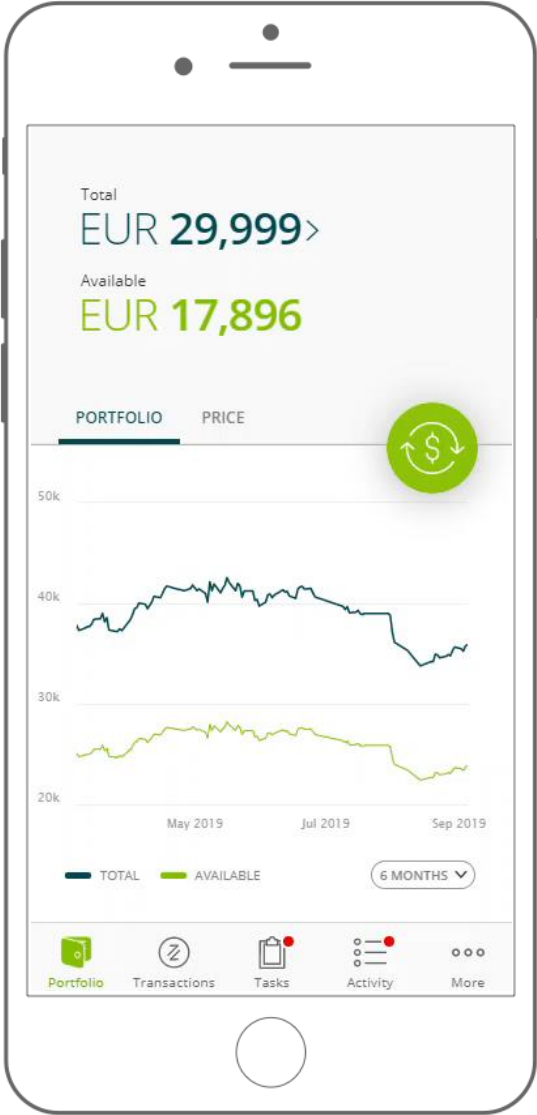
- 3,000
- 15,000
- 30,000



# Submission experience

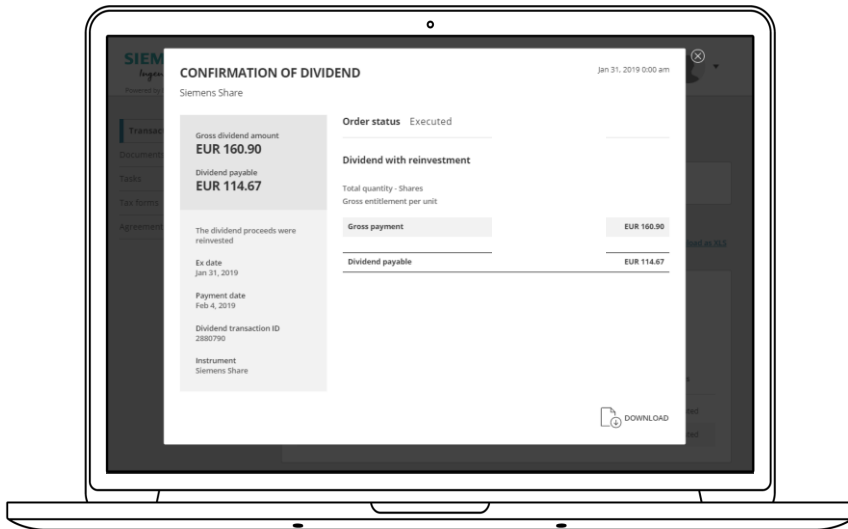


# Submission experience on Mobile





# Donation evidence



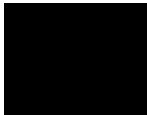
»» fintechgroup bank

FinTech Group Bank AG  
Rotfeder-Ring 7  
D-60327 Frankfurt am Main  
Germany

Contact information  
Equatex Contact Centre  
www.equateplus.com

Account information  
User ID: 4672899

04 March 2019



## Confirmation of dividend distribution with reinvestment

### Dividend details

Ex date: 31 Jan 2019  
Payment date: 4 Feb 2019

ISIN: DE0007236101  
Instrument: SIE

### Entitlement

Total quantity - Shares	42.344 units	
Gross entitlement per unit	3.8 EUR	
<b>Gross entitlement</b>		<b>160.90 EUR</b>

### Debits

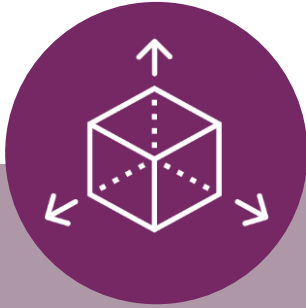
Gross taxable amount	160.90 EUR	
Net taxable amount	160.90 EUR	
Withholding tax on capital gain	-40.23 EUR	
Solidarity surcharge withheld	2.28 EUR	
Donation to Siemens Stiftung	-3.80 EUR	
<b>Total debits</b>		<b>-46.23 EUR</b>

<b>Net entitlement</b>	<b>114.67 EUR</b>
------------------------	-------------------

The payout is reinvested.

No tax statement. The yearly tax statement will follow separately.

Please notice the important information on the next page.



## Trust

charity feature connected with corporate foundation and other reliable charities



## Ease

donation only one click away and easy access to evidence



## Timing

donation option provided at the right moment



# Would you offer a donation option to your participants?

- Yes
- Yes, if my company had an established charity foundation
- No, but I like the idea
- No

A young girl and a young boy are focused on a small electronic circuit on a table. The girl, on the left, is leaning over the table, and the boy, on the right, is holding a component. A small light bulb is glowing brightly, connected to red and black wires. The background shows a classroom setting with bookshelves and a window with patterned curtains.

**SIEMENS**  
*Ingenuity for life*

# Cents4Sense

Social responsibility empowered through share ownership

© Siemens 2019

[siemens.com](http://siemens.com)