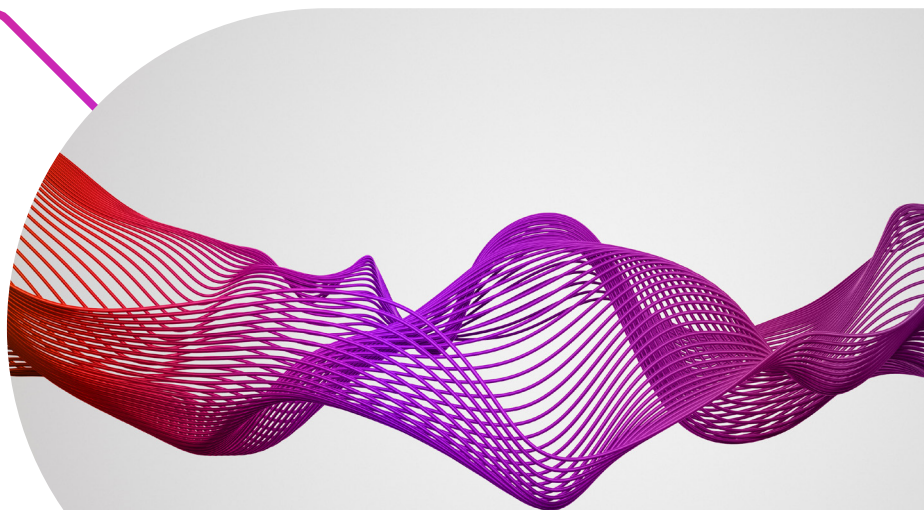




INVESTOR ENGAGEMENT

# Investor Intelligence



**Deepen intelligence.  
Increase transparency.  
Influence outcomes.**

Delivered through **CMi2i** – part of the Computershare Group – our Investor Intelligence solution helps companies see beneath the surface of investor behaviour to reveal who truly holds sway across their equity and debt structures. By combining precision, transparency and near real-time analytics, it enables leadership teams to anticipate risk, understand investor motivation and influence outcomes with confidence.

## Why it's essential

Knowing who your investors are – and what motivates them – gives you a powerful edge. With accurate, transparent and verifiable intelligence, you can reduce uncertainty, anticipate risk and focus your strategy on what matters most to the market.

Investor Intelligence helps companies move beyond static or incomplete data by uncovering the real ownership picture – improving alignment, supporting better decisions and helping mitigate transaction, governance or reputational risk.

## How it works

Investor Intelligence delivers a single, verified view of influence across your investor base – spanning both equity and debt. The service combines proprietary data, market research and ownership analysis to uncover the people behind the capital and the power behind the vote.

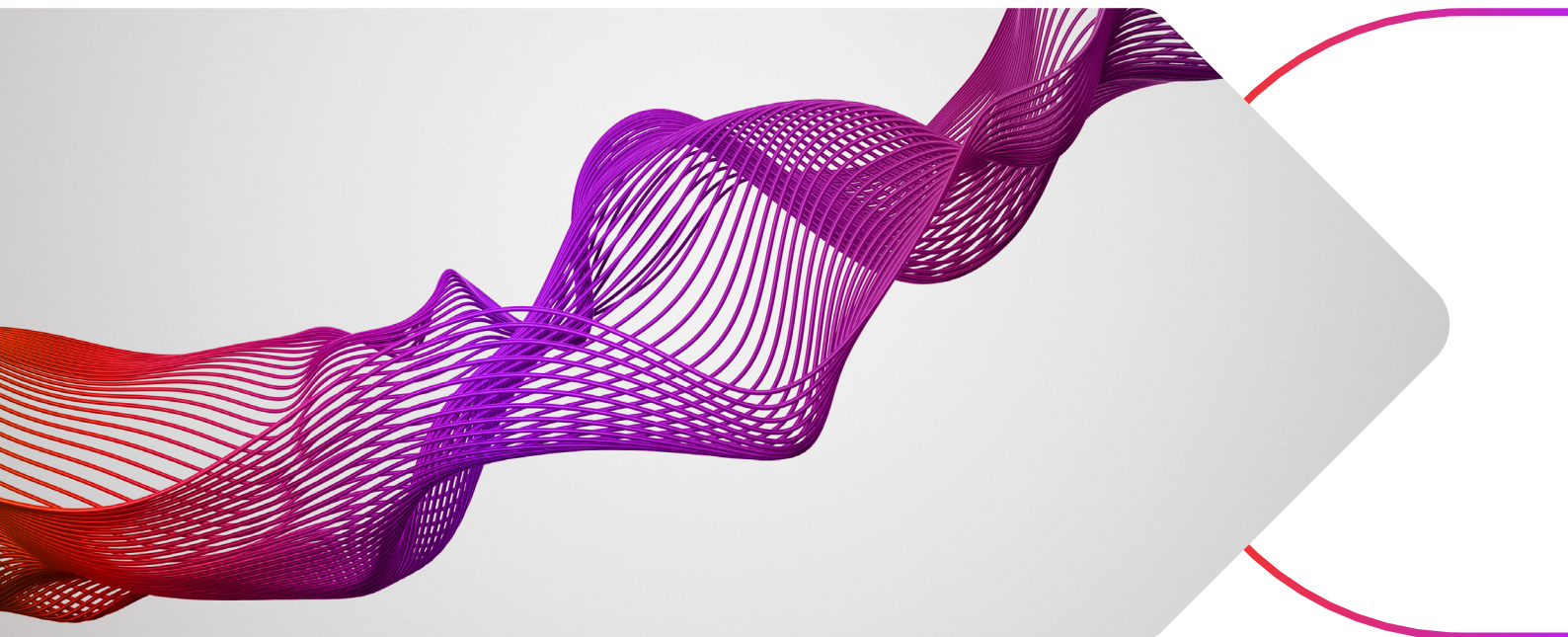
## What you get

-  Near real-time analysis of shareholder and bondholder ownership
-  Identification of beneficial owners, including the investment and stewardship decision-makers
-  Voting power visibility and influence mapping
-  Global investor tracking and profiling
-  A unified source of truth across capital structures

**For leaders who want to  
influence outcomes**

Investor Relations leads, Governance teams,  
C-Suite decision-makers

**Contact your RM to find out more**



## Why it's unique

- **Built for influence, not just visibility** – goes beyond identifying ownership to reveal voting power and real decision-makers
- **Near real-time, verified intelligence** – eliminates lag, inaccuracy and guesswork
- **Equity and debt coverage** – greater transparency across the full capital structure
- **Ecosystem integration** – operates alongside the *ingage* platform and advisory services across the Computershare suite

## Individually powerful. Together, transformational.

Investor Intelligence offers clear strategic value on its own – but when combined with **ingage** and **Georgeson Advisory**, it becomes part of a connected, intelligent ecosystem designed to drive action, enhance alignment and materially reduce risk.

Together, these services provide near real-time visibility of influence, more accurate engagement and expert support during critical moments – giving boards, IR teams and governance leaders the tools to identify issues early and manage shareholder-related risks before they escalate.

This is more than integration. It's strategic advantage.

**True influence starts here.**

## What you gain

-  Clear understanding of who can shape outcomes – and why
-  Enhanced ability to anticipate, quantify and manage investor-related risk
-  Confidence to brief boards and stakeholders with accurate data
-  Early warning on strategic risks or destabilising behaviour
-  Trusted decision-making grounded in insight, not assumption