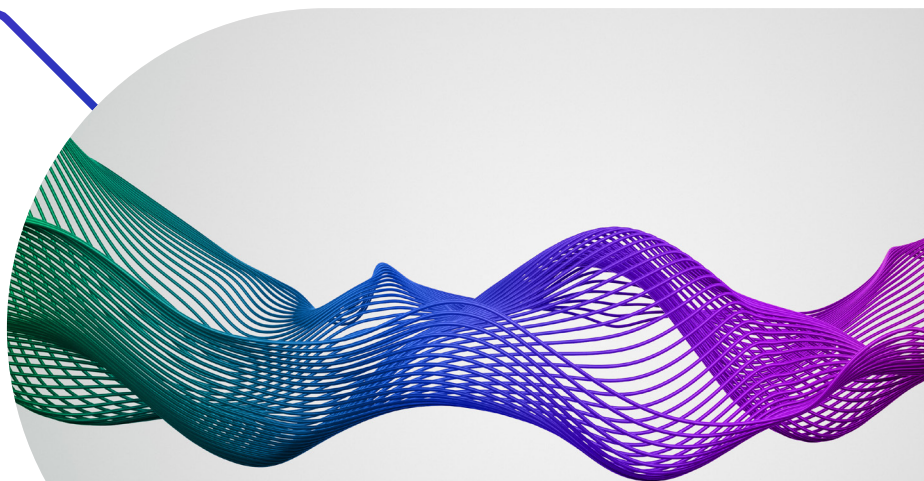




INVESTOR ENGAGEMENT:

Investor Relations



Manage connections.
Elevate conversations.
Influence outcomes.

At the heart of our Investor Relations solution sits **ingage**, a specialist CRM platform designed to support high-quality investor engagement at every level. Built by IR professionals for IR professionals, *ingage* helps IR teams stay ahead of every conversation from day-to-day meeting management to long-term planning and feedback tracking.

Why it's essential

IR teams often describe *ingage* as their "Swiss army knife" – a single, dependable tool that keeps their daily tasks across meetings, tracking and reporting organised.






By simplifying complex workflows and reducing admin, it frees up time to focus on the relationships that matter most – and ensures nothing slips through the cracks during fast-moving or high-risk scenarios.

In complex environments, structure and speed become critical. *ingage* helps reduce exposure to communication gaps, missed opportunities and inconsistent investor messaging.

How it works

ingage provides a dedicated IR workspace where teams can plan, track and analyse investor engagement at scale – while staying prepared for high-stakes moments.

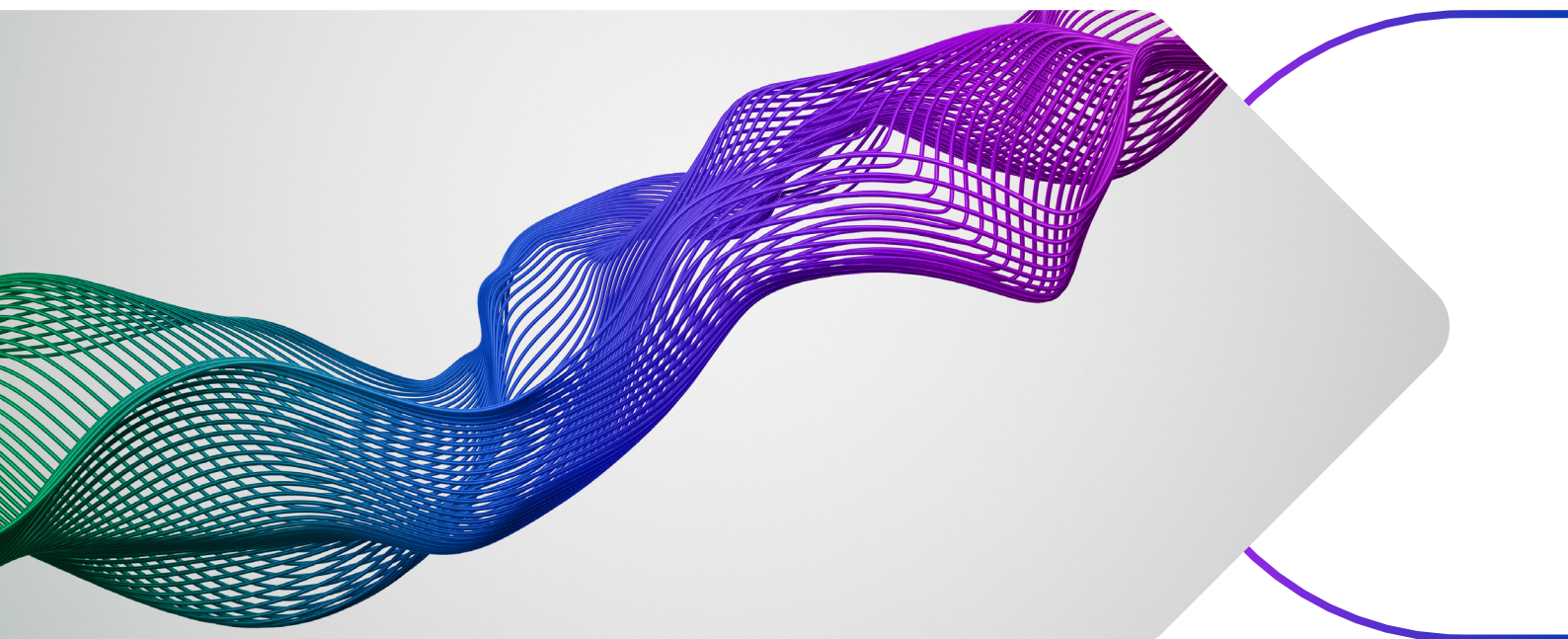
What you get

-  Centralised IR CRM for meeting and interaction management
-  Contact tracking, calendar planning and roadshow scheduling
-  Structured feedback capture across engagement cycles
-  iOS app for accessing itineraries and investor profiles
-  Proactive customer success and expert tech support, tailored for IR teams

For leaders who want to
influence outcomes

IR professionals, communications leaders,
corporate affairs and the C-suite

Contact your RM to arrange a demo



Why it's unique

- **Built by IR professionals** – made for the unique needs of IROs
- **Designed for real influence** – engagement tools that go beyond logistics to shape sentiment
- **Client service** – expert, responsive support, ensuring you drive the most value from the system
- **Feedback loop integration** – turn direct insight from meetings into better messaging and strategy
- **Modern technology** – built for the cloud, supporting high performance and flexibility to continually develop new and enhanced features

Individually powerful. Together, transformational.





As a standalone platform, ingage delivers clear strategic value. But when combined with **Investor Intelligence** and **Georgeson Advisory**, it creates an ecosystem of insight, engagement and action.

Together, they help leadership teams stay aligned, act with consistency and reduce risk across the full spectrum of investor engagement and sentiment management.

This is more than integration. It's strategic advantage.

True influence starts here.

What you gain

-  Ability to communicate more effectively and consistently
-  More efficient calendar, roadshow and activity management
-  Insights to refine narrative and strengthen investor alignment
-  Expert support to protect value under pressure